



# TV LISTENING SYSTEM

## BeHear ACCESS + HearLink PLUS

# Quick Start Guide



[support@alango-behear.com](mailto:support@alango-behear.com)

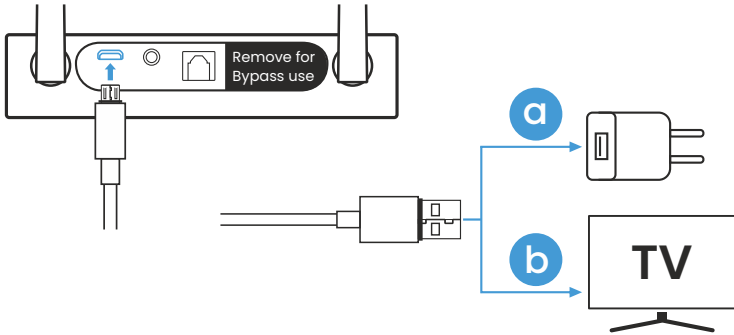


[www.alango-behear.com](http://www.alango-behear.com)

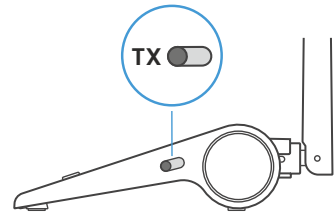
# A

## Getting Started

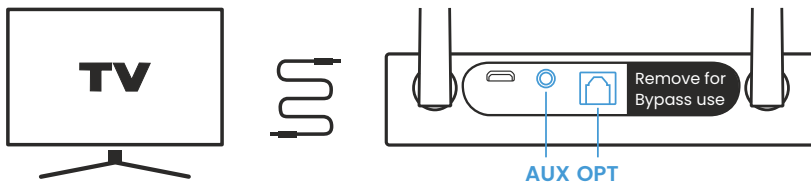
1. Connect HearLink PLUS to a power outlet (a) or the TV set's USB port (b) using the supplied USB power cable. HearLink PLUS will turn ON automatically.



Verify that the mode switch is set to **TX** position



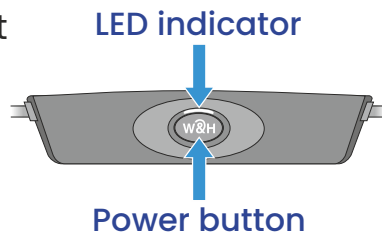
2. Connect the HearLink PLUS TX port to the TV (or other media device) via the supplied optical or 3.5mm audio cable. The active connection type is indicated by the illuminated text (**OPT** or **AUX**).



Make sure to remove the plastic protectors from the optical cable terminals prior to insertion.



3. Turn on the BeHear ACCESS headset by pressing the Power button and holding it until the unit vibrates and the LED turns light blue. A voice prompt will be played.



4. Successful connection of the BeHear ACCESS is indicated by the illuminated **A** on the HearLink PLUS panel.

The **LL** is illuminated to indicate that the Low Latency APTX-LL Bluetooth CODEC is being used.



*If the automatic connection is delayed, briefly press the BeHear ACCESS Power button to reconnect it to the HearLink PLUS transmitter.*

## 1. HearLink PLUS Manual Control



Short press to toggle audio **Play/Pause**.



Press to **increase** the volume. A tone is played when maximum volume is reached.



Press to **decrease** the volume. A tone is played when minimum volume is reached.

## 2. BeHear ACCESS Remote Control

Manage audio play using the headset's left-hand controls.



Short press to toggle **Play/Pause** audio.

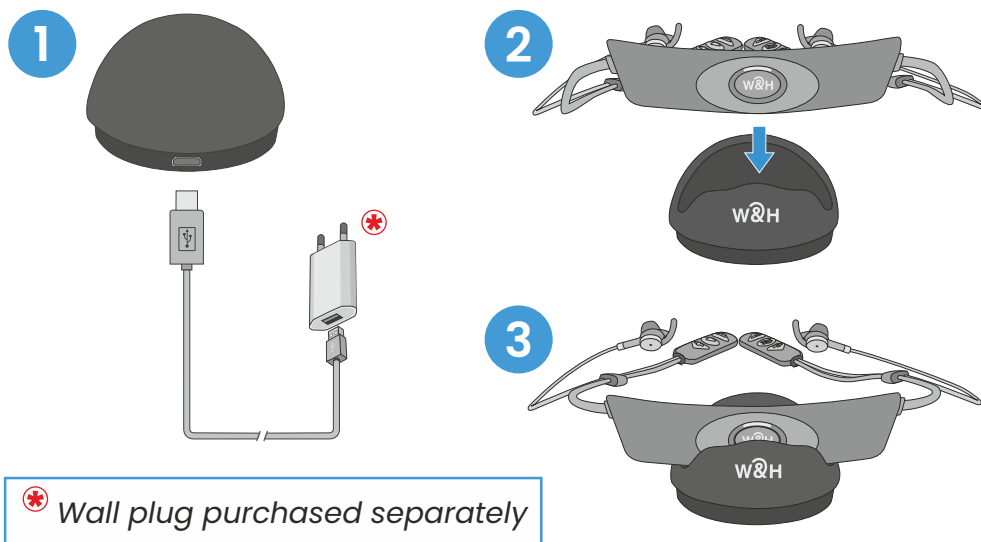


Press to **increase** the volume. A tone is played when maximum volume is reached.






Press to **decrease** the volume. A tone is played when minimum volume is reached.

1. To charge the BeHear ACCESS headset, connect the small end of the supplied micro-USB cable to the charging cradle, and the large end via a power adapter to a wall socket (or directly to a USB port).




The LED indicator is red during charging and turns green when the headset is fully charged, typically within 2-3 hours.

2. If you do not hear audio:
  - ▶ Ensure that the 'audio out' port of your TV connected to the HearLink PLUS is active. For some devices you need to enable the audio output. Refer to your device's user manual.
  - ▶ Toggle the Play/Pause  button on the BeHear headset's left-hand control box or  button on the HearLink PLUS.

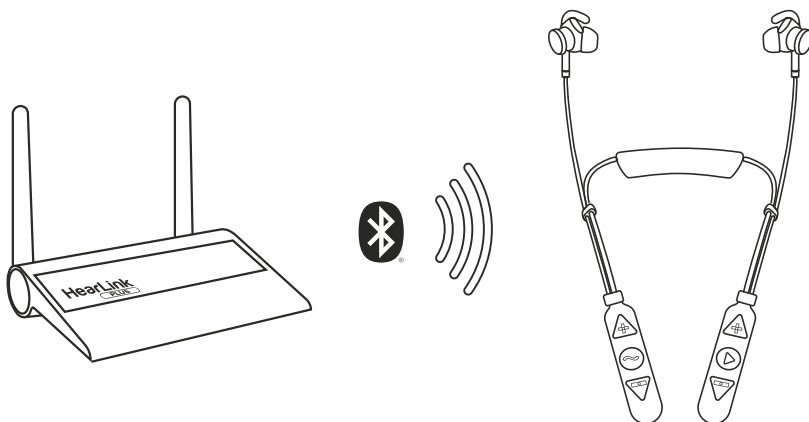
3. If the automatic connection is delayed, briefly press the BeHear ACCESS Power button  to reconnect it to a previously paired HearLink PLUS transmitter.

4. To restore connection between BeHear ACCESS and Hearlink Plus transmitter:

- ▶ Place HearLink PLUS into pairing mode with a short press on its  button.

When in pairing mode the **TX** indicator light will flash quickly.

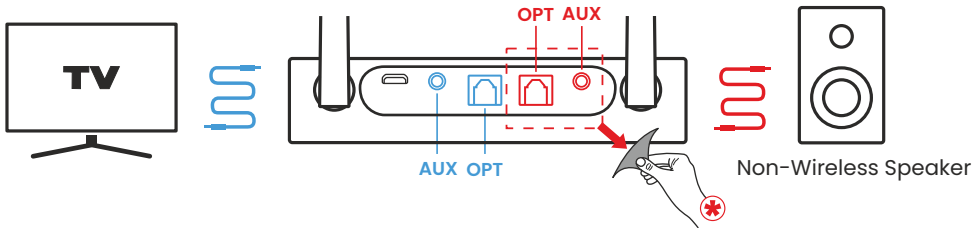
- ▶ Turn OFF BeHear ACCESS.
- ▶ Press its Power button and hold it until the voice prompt says: "Pairing mode active" and the LED blinks in alternating red and blue.
- ▶ Place the BeHear ACCESS headset close to the HearLink PLUS device.



- ▶ When pairing is complete (after 5-30 seconds) **TX** will be illuminated on the HearLink PLUS panel.


Successful connection of the BeHear ACCESS headset is indicated by the illuminated **A** or **B** on the HearLink PLUS panel.

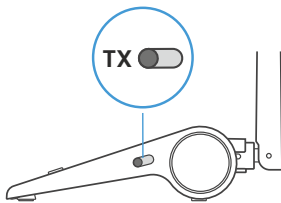
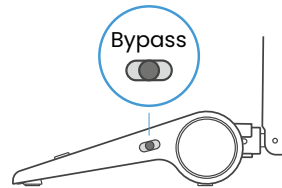
5. Use the HearLink PLUS **Bypass** mode to maintain the existing interfaces between your TV and peripheral audio equipment.



\* Remove the sticker to expose the **RX** ports.

Remove protection sticker from the rear panel and connect the Hearlink PLUS **TX** port to the TV via the optical or 3.5mm audio cable, and the **RX** port to a speaker or other peripheral audio equipment using the same type of cable as the **TX** port connection.

To passthrough HearLink PLUS set its Mode switch to **Bypass** position, indicated by .



To restore connection with the BeHear ACCESS headset set the Mode switch to **TX**.

6. More details about Hearlink Plus and BeHear ACCESS can be found in their user manuals.



[www.alango-behear.com](http://www.alango-behear.com)



[support@alango-behear.com](mailto:support@alango-behear.com)