



Neck Speaker & Personal Hearing Amplifier



Model: ABH-130

Quick Start Guide

Place BeHear PROXY on your shoulders and enjoy a rich, clear, and comfortable listening experience for:

- Television
- Streamed music
- Mobile calls
- Gaming

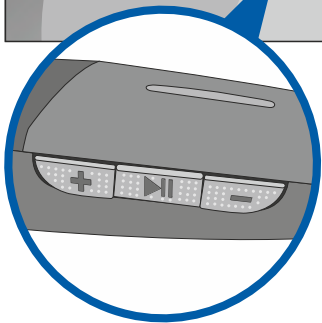
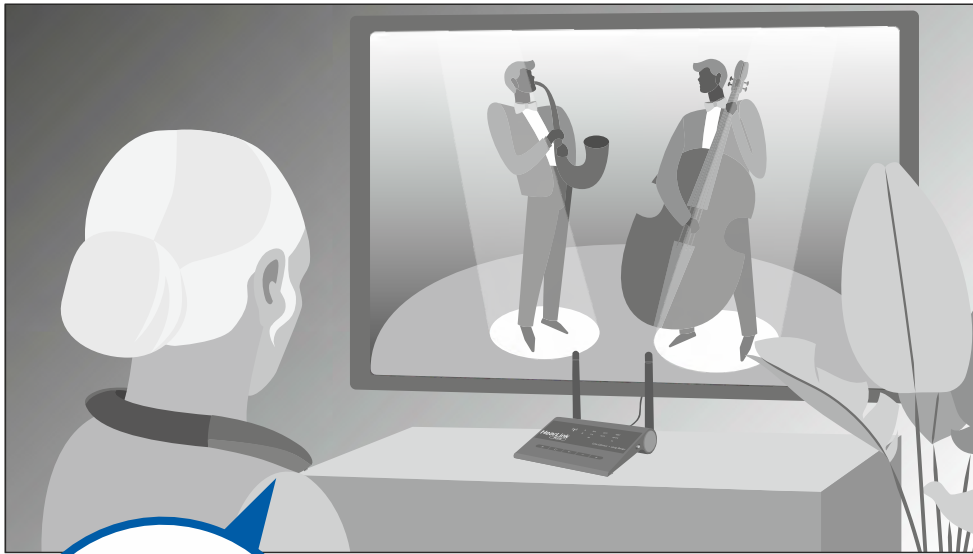


Use its extractable earphones for privacy and personalized hearing amplification.



*Suitable for use
with hearing aids*

Watching Television



Connect BeHear PROXY to your TV set and manage the audio from the right-hand side of the neck speaker.



Short press to mute/unmute the sound.



Increase the volume.

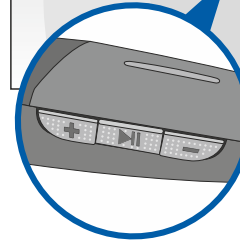
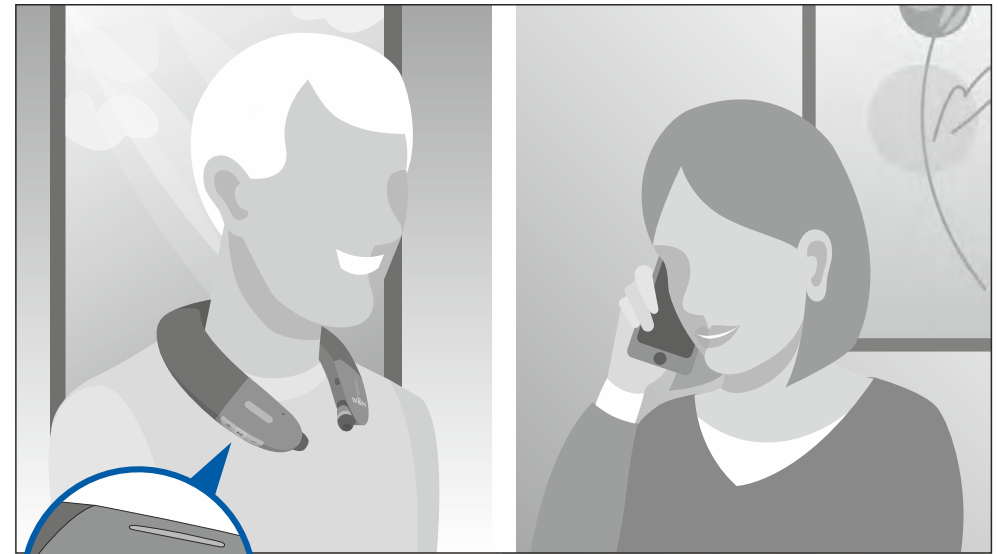


Decrease the volume.



*If your TV doesn't have a built-in Bluetooth transmitter, we recommend purchasing our **HearLink® PLUS** - a high quality, long-range Bluetooth transmitter.*

Mobile Calls



Connect BeHear PROXY to your smartphone and handle calls from the right-hand side of the neck speaker.



Short press to accept an incoming call.

Short press to end the active call.

Long press to reject an incoming call.

Double press to redial last number.

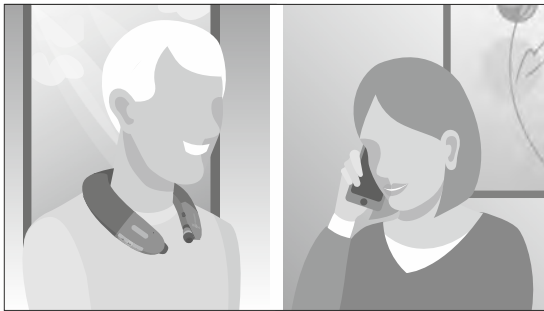


Increase the call volume.



Decrease the call volume.

For Mobile Calls*



Improve intelligibility during a mobile call by slowing down incoming speech using **EasyListen™**.



Press and hold briefly to slow down the speech.



Press and hold briefly to return to the normal speech tempo.

* In Loudspeaker and Earphones modes  

For Private Listening**

To stay aware of important world sounds and nearby conversation during audio play, activate the ListenThrough™ function.

Ambient sounds will pass to your ears when the earphones are inserted.

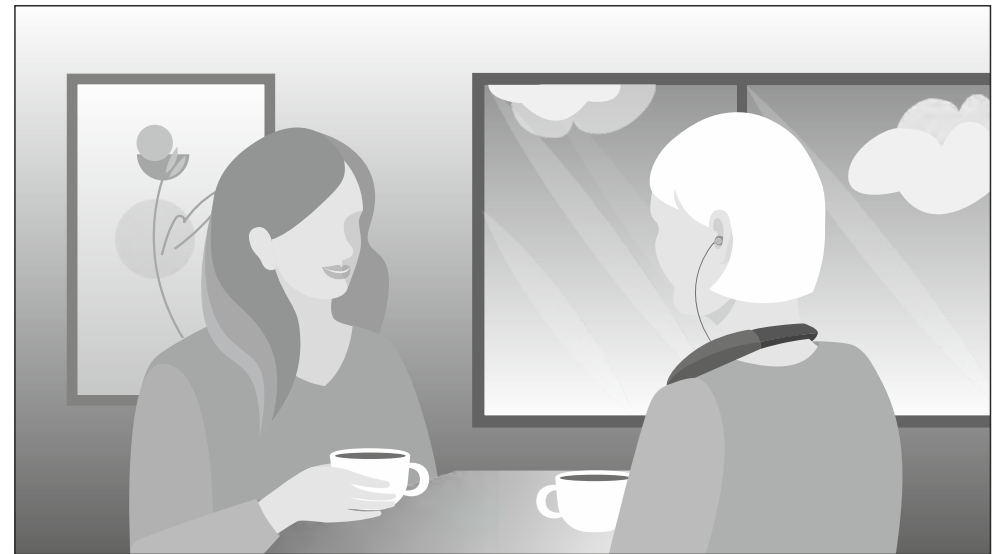


Press and hold briefly to turn ambient sounds ON/OFF.

To enable this function, go to **Settings >> Device** menu in the W&H BeHear app.

** In Earphones mode only 

For Live Conversations***



- Amplify and clarify nearby conversations.
- Use the most comfortable ear buds.
- Match amplification level to suit your own hearing profile.



Press and hold briefly to turn personalized sound amplification ON/OFF.

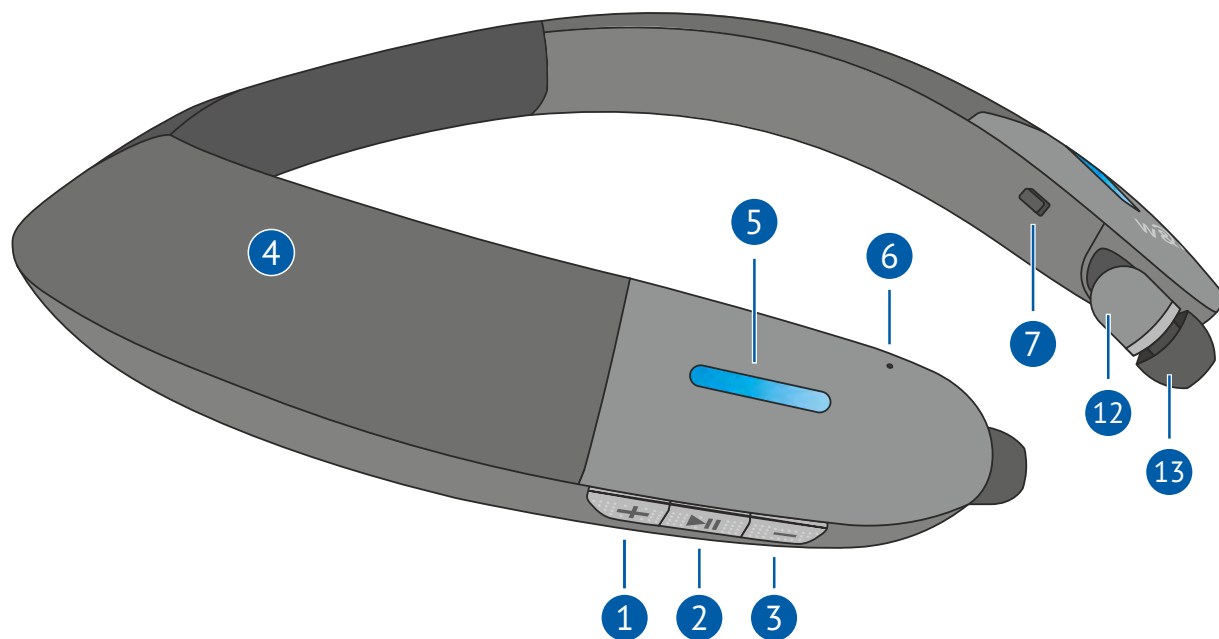


Increase the volume.



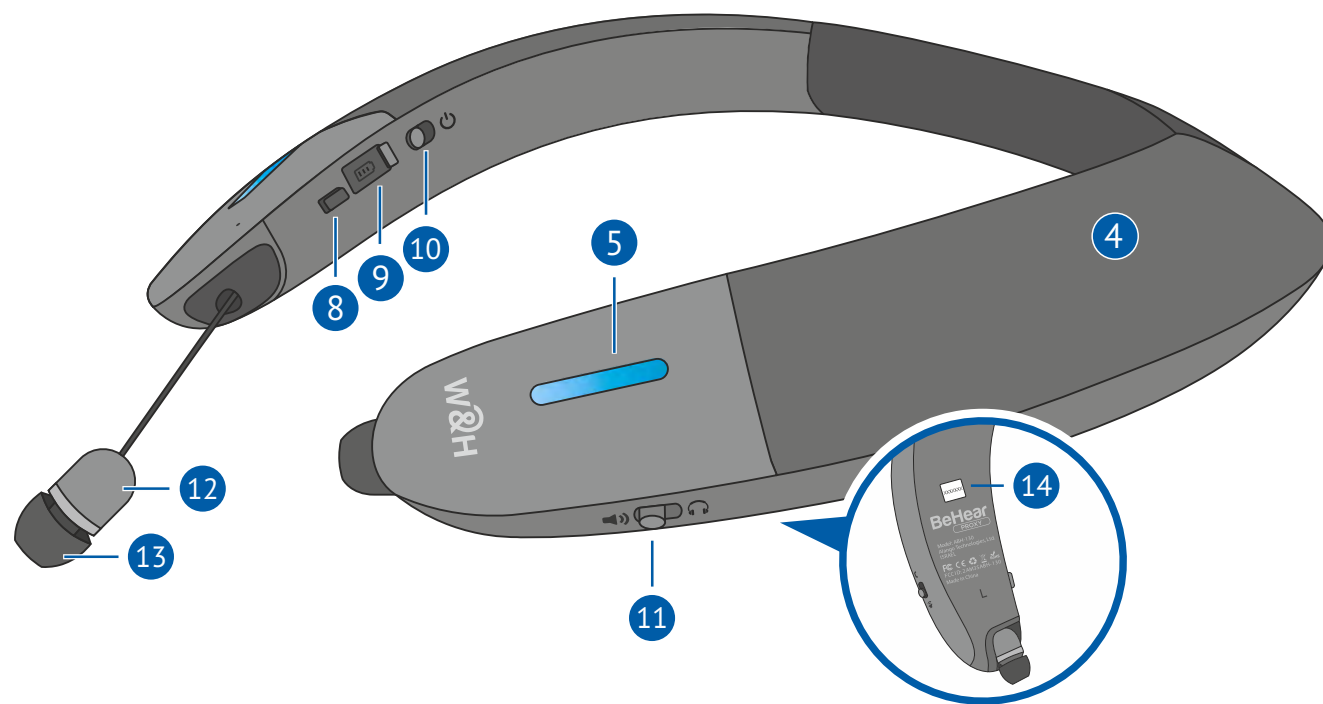
Decrease the volume.

*** In Earphones mode only 



1. Volume up
2. Multifunction button
3. Volume down
4. Loudspeakers (left & right)
5. Notification LED (left & right)
6. Microphone
7. Left retract button

8. Right retract button
9. Micro USB charging port
10. Power ON/OFF switch
11. Mode switch
12. Extractable earphones (left & right)
13. Silicone earbuds (left & right)
14. Serial number label



6

LED Indication

Light blue (1s flash)	● Neck speaker is powered ON/OFF (toggle)
Purple, blinking	● Assistive function active
Red/blue alternating	● Bluetooth pairing mode
Red, blinking	● Disconnected from paired Bluetooth device, or battery low
Red, steady	● Charging
Green, steady	● Battery fully charged

To check battery level, briefly press power button when the unit is turned on:

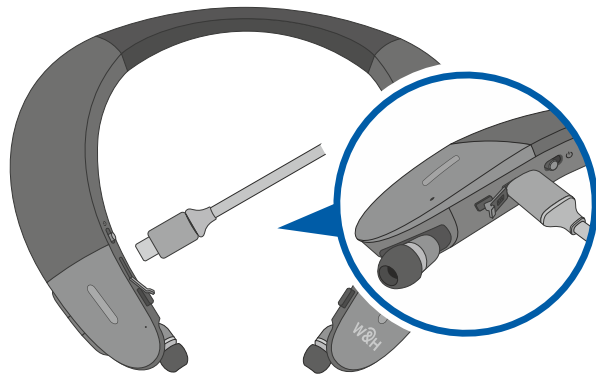
Green	● Good > 50%
Yellow	● Fair > 10% and < 50%
Red, blinking	● Low < 10%

7

Charging the Battery

Charge the neck speaker directly from a wall outlet or computer USB port.

The LED indicator is red during charging and turns green when the neck speaker is fully charged. Full charging takes up to 3 hours.



8

Troubleshooting

No sound	● Verify battery is charged. ● Adjust volume level. ● Check ear caps for debris.
Ear buds are uncomfortable	● Experiment with different silicone ear tips.
Phone calls and/or music not routed	● Verify Bluetooth pairing.
Bluetooth disconnects often	● Verify that you are not more than 10 meters (30 feet) from the Bluetooth device.
Hearing interruptions	● Silence phone tones (alerts, notification sounds, key taps, etc.).
Unexpected behavior	● Reset the neck speaker by connecting it to the charger.

9

Support



<https://bit.ly/bhproxy-video>



support@WearAndHear.com



www.WearAndHear.com